



CHILDREN'S EDUCATION SOCIETY (Regd.)

Administrative Office:

1st Phase, JP Nagar, Bengaluru – 560 078

☎: 080-61754501 – 502 Fax: 080-2654 8658

THE OXFORD COLLEGE OF ENGINEERING

(Recognized by the Govt. of Karnataka, Affiliated to Visvesvaraya Technological University, Belagavi,

Approved by A.I.C.T.E. New Delhi & Recognized by UGC Under Section 2(f),

Accredited by NBA, New Delhi, NAAC 'A' Grade with score of 3.24 & Diamond Rating by QS I Guage)

Bommanahalli, Hosur Road, Bengaluru – 560068. ☎: 080 -61754601/602

E-mail: engprincipal@theoxford.edu Web: www.theoxfordengg.org

Feedback is an essential element of the learning process. The college collects the offline feedback on various curriculum aspects and courses from different stakeholders such as the students, faculty, employer and Alumni. The feedback collected from the individuals has been analysed and taken into the consideration for the improvement in teaching and learning process, and to provide additional courses to the students to bridge the gap between curriculum and industry requirements.

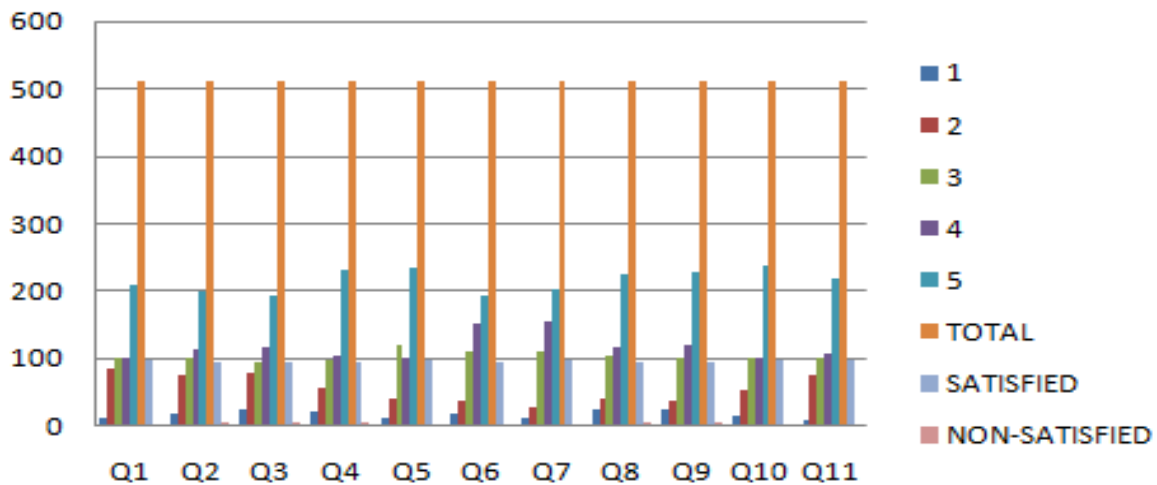
1. Feedback from students

The student's feedback analysis on Faculty-2023-24

RANGE SCALE/ QUESTIONS	Q1	Q2	Q3	Q4	Q5	Q6	Q7	Q8	Q9	Q10	Q11	RATING
1	14	19	26	21	14	18	12	25	24	15	10	
2	85	75	79	56	41	38	29	40	37	55	75	
3	100	103	96	98	120	111	112	106	103	100	101	
4	103	114	117	105	101	151	156	116	120	103	107	
5	210	201	194	232	236	194	203	225	228	239	219	
TOTAL	512	512	512	512	512	512	512	512	512	512	512	avg
SATISFIED	97.27	96.29	94.92	95.9	97.27	96.48	97.66	95.12	95.31	97.07	98.05	96.5
NON-SATISFIED	2.73	3.71	5.08	4.1	2.73	3.52	2.34	4.88	4.69	2.93	1.95	3.5

Principal
PRINCIPAL
The Oxford College of Engineering
Bommanahalli, Hosur Road
Bengaluru-560 068

student feedback



Feedback Questions

Q1: Has the teacher covered entire syllabus.

Q2: Has teacher covered relevant topics beyond syllabus.

Q3: Pace on which the content were covered.

Q4: Motivation and inspiration for students to learn.

Q5: Support for the development of the students. Skill practical demonstration.

Q6: Support for the development of students? Skill –Hands on training.

Q7: Clarity of expectations of student.


Q8: Feedback provided by faculty on student’s progress.

Q9. Willingness to offer help and advice to students

Q10. Effectiveness of teacher in terms of technical content/course content

Q11. Effectiveness of teacher in terms of communication skill.

Q12. Effectiveness of teacher in terms of use of teaching aids.


Principal
PRINCIPAL
 The Oxford College of Engineering
 Bommanahalli, Hosur Road
 Bengaluru-560 068

IQAC analysis student's feedback on Faculty

----- Students are satisfied with faculty's performance at the oxford college of engineering, Bangalore. The HoD's of the respective department are advised to monitor Teaching and Learning process for further improvement.

Suggestion Recommended:

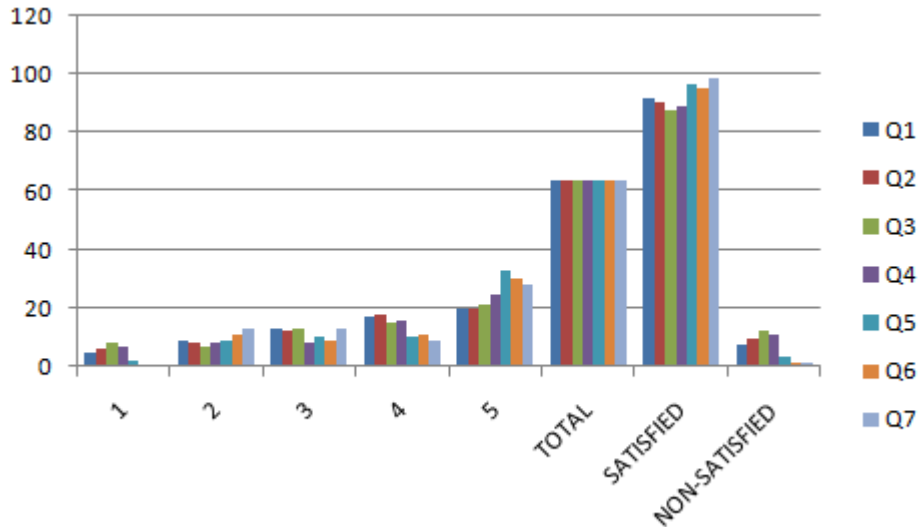
- Conduct more hands-on workshop /add on courses/ value added courses on latest technology to upgrade the knowledge of students

2. Feedback from Faculty

Faculty Feedback

RANGE SCALE/ QUESTION S	Q1	Q2	Q3	Q4	Q5	Q6	Q7	RATING
1	5	6	8	7	2	1	1	
2	9	8	7	8	9	11	13	
3	13	12	13	8	10	9	13	
4	17	18	15	16	10	11	9	
5	20	20	21	25	33	30	28	
TOTAL	64	64	64	64	64	64	64	avg
SATISFIED	92.19	90.63	87.5	89.06	96.88	95.31	98.44	92.5
NON-SATISFIED	7.81	9.38	12.5	10.94	3.13	1.56	1.56	7.5

Principal
PRINCIPAL
The Oxford College of Engineering
Bommanahalli, Hosur Road
Bengaluru-560 068



Feedback Questions

Q1: Does the institute encourage faculty participation in university academic and examination.

Q2: Whether topics in syllabus are relevant to programme outcome.

Q3: Whether the sequence of the course in the programme is effective.

Q4: Evaluation scheme designed for each of the course.

Q5: Are the course designed in relation to real time applications as per the industry needs.

Q6: Does the institute provide enough online/offline facilities to access study materials for teaching and learning.

Q7: Is the curriculum implemented, career oriented and inclined towards employability and skill development.

Principal
PRINCIPAL
The Oxford College of Engineering
Bommanahalli, Hosur Road
Bengaluru-560 068

IQAC analysis Faculty's feedback on curriculum

Majority of the faculties are very much satisfied with curriculum designed by the VTU.

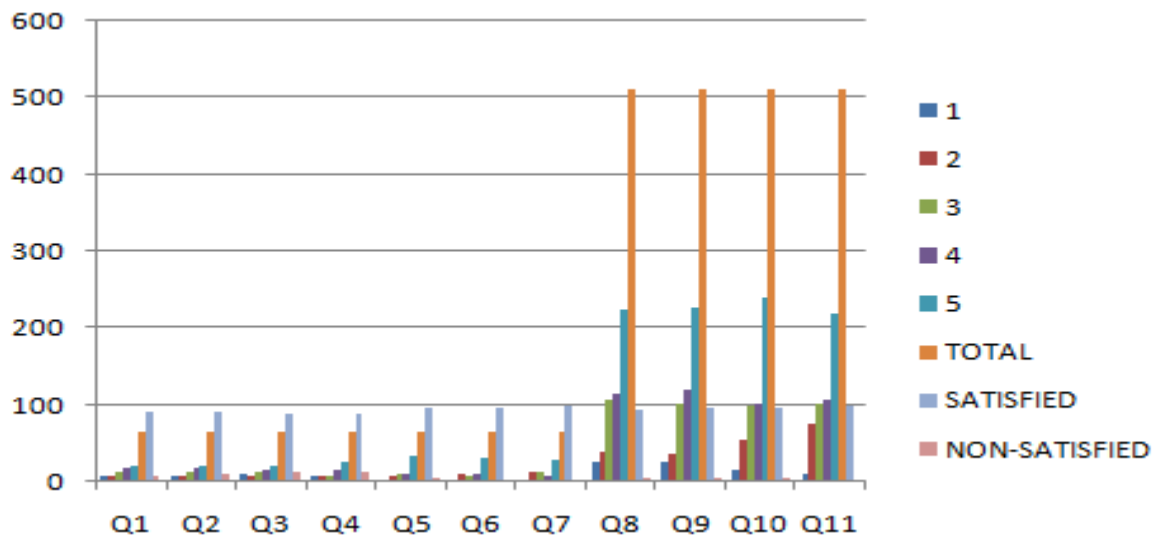
Suggestion recommended:

- Facilitate the faculty to attend the FDP,NPTEL, Workshop in their area of domain

3. Feedback from Alumini

Alumini Feedback

RANGE SCALE/ QUESTIONS	Q1	Q2	Q3	Q4	Q5	Q6	Q7	Q8	Q9	Q10	Q11	RATING
1	5	6	8	7	2	1	1	25	24	15	10	
2	9	8	7	8	9	11	13	40	37	55	75	
3	13	12	13	8	10	9	13	106	103	100	101	
4	17	18	15	16	10	11	9	116	120	103	107	
5	20	20	21	25	33	30	28	225	228	239	219	
TOTAL	64	64	64	64	64	64	64	512	512	512	512	avg
SATISFIED	92.19	90.63	87.5	89.06	96.88	95.31	98.44	95.12	95.31	97.07	98.05	94
NON-SATISFIED	7.81	9.38	12.5	10.94	3.13	1.56	1.56	4.88	4.69	2.93	1.95	6



Principal
PRINCIPAL
 The Oxford College of Engineering
 Bommanahalli, Hosur Road
 Bengaluru-560 068

Feedback Questions

- Q1. Does the Institute involve Alumni in PAC meeting?
- Q2. Whether the Curriculum offered is in relation to your current professional standards?
- Q 3. Whether the content of syllabus is sufficient to bridge the gap between academia and industry.
- Q4. Whether the institution is practicing latest Teaching and learning methodologies.
- Q5. Whether the institute involves alumni in designing bridge courses
- Q 6. Whether the institute involves alumni in conducting program specific Industrial visits
- Q7. Whether the institute involves alumni in offering industrial internships
- Q8. Whether the institute incorporates alumni inputs on latest industry requirements in designing add-on/certificate programs
- Q9. Does alumni mentor for Student project
- Q10. Whether the design of the course offered provides scope for extra learning or selflearning.
- Q11. Whether the Institute supports and contributes for overall development of students.

IQAC analysis Faculty's feedback on curriculum

Courses structure need to be more relate with global trends and incorporate with IT companies to meet the industry standards using ICT tools for teaching Learning process.

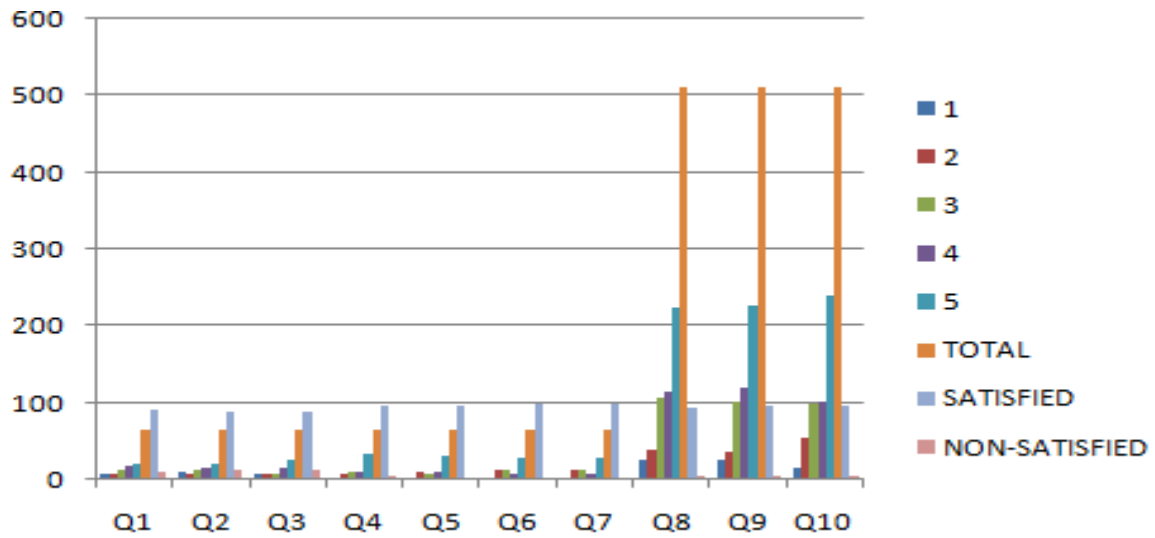
Suggestion recommended:

- Involve alumini in conducting FDP,NPTEL, Workshop in their area of domain

4. Feedback from Employer

RANGE SCALE/ QUESTIONS	Q1	Q2	Q3	Q4	Q5	Q6	Q7	Q8	Q9	Q10	RATIN G
1	6	8	7	2	1	1	1	25	24	15	
2	8	7	8	9	11	13	13	40	37	55	
3	12	13	8	10	9	13	13	106	103	100	
4	18	15	16	10	11	9	9	116	120	103	
5	20	21	25	33	30	28	28	225	228	239	
TOTAL	64	64	64	64	64	64	64	512	512	512	avg

SATISFIED	90.63	87.5	89.06	96.88	95.31	98.44	98.44	95.12	95.31	97.07	94
NON-SATISFIED	9.38	12.5	10.94	3.13	1.56	1.56	1.56	4.88	4.69	2.93	6



Q1. Does the institute involve employer in PAC meeting of the institution?

Q2. Whether the curriculum offered in relation to your current professional standards?

Q3. Whether the content of syllabus is sufficient to bridge the gap between academia and industry.

Q4. Whether the institute obtains employer insights on syllabi content with global trends

Q5. Whether the institution is practicing latest teaching and learning methodologies.

Q6. Whether the institute involves employer in designing bridge courses ?

Q7. Whether the institute involves employer in conducting program specific industrial visits?

Q8. Whether the institute involves employer in offering industrial internships

Principal
PRINCIPAL
 The Oxford College of Engineering
 Bommanahalli, Hosur Road
 Bengaluru-560 068

Q9. Whether the institute incorporates employer inputs on latest industry requirements in designing add-on/certificate programs

Q 10. Whether the design of the course offered provides scope for extra learning or selflearning

IQAC analysis Faculty's feedback on curriculum

Employer still believes in little changes with advanced domain is required in curriculum and expect more inclusion of employer in DAC meeting which will in line with industrial needs.

Suggestion recommended:

- Involve Employer in conducting addon courses/Certificate programs in their area of domain



Principal
PRINCIPAL
The Oxford College of Engineering
Bommanahalli, Hosur Road
Bengaluru-560 068